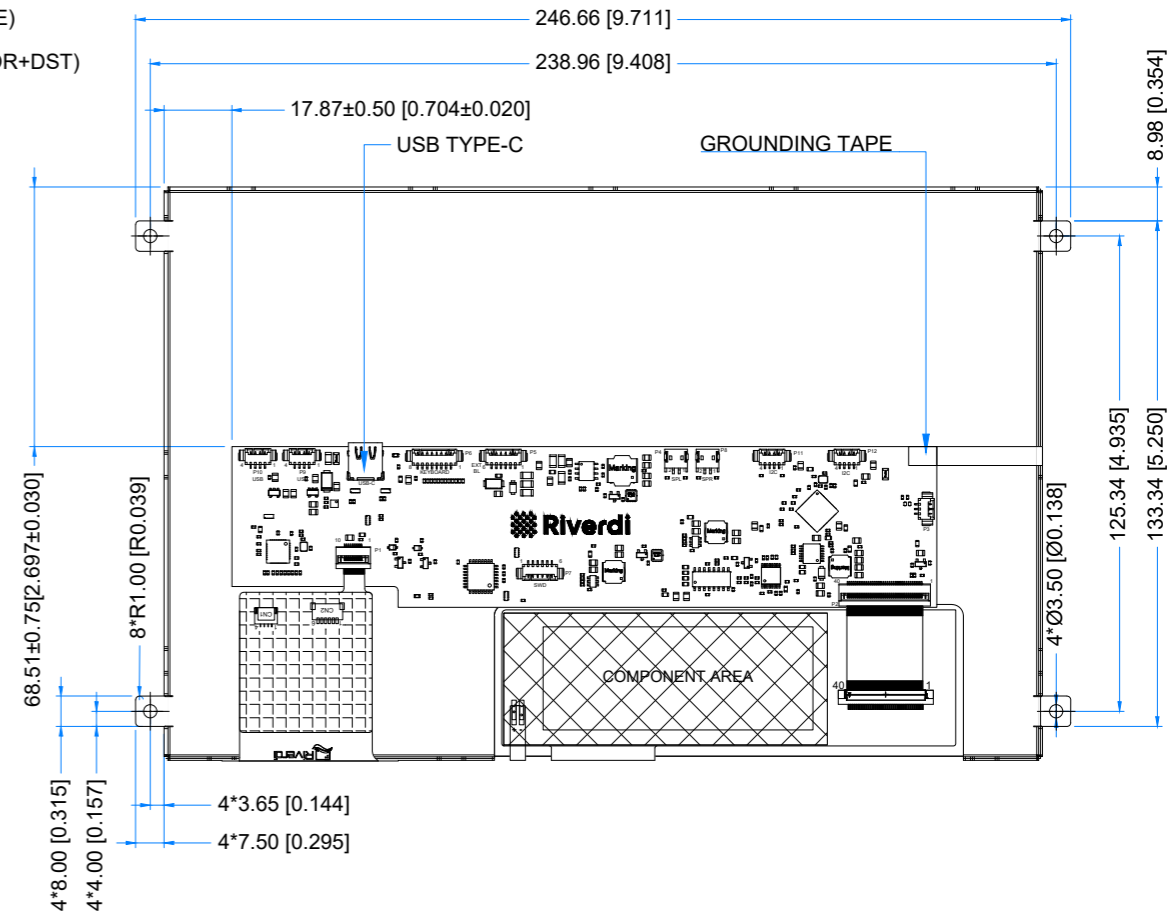
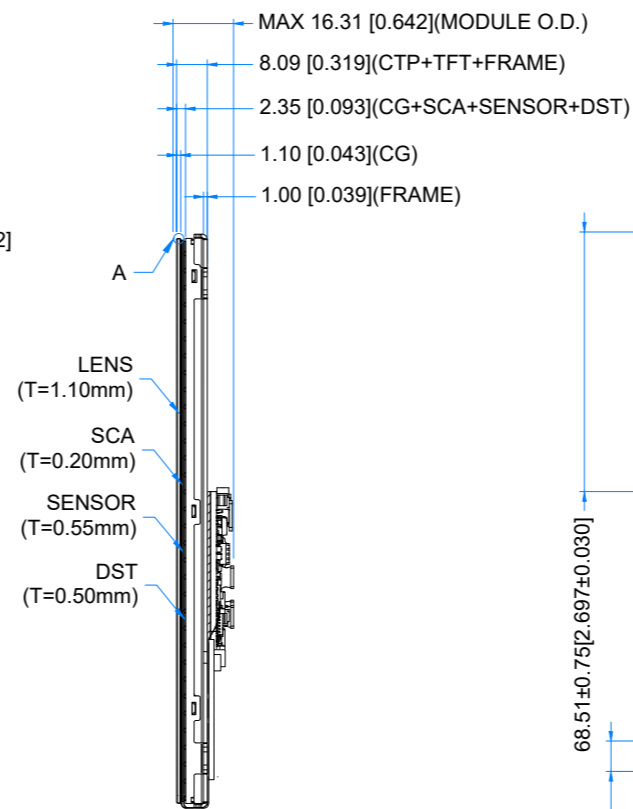
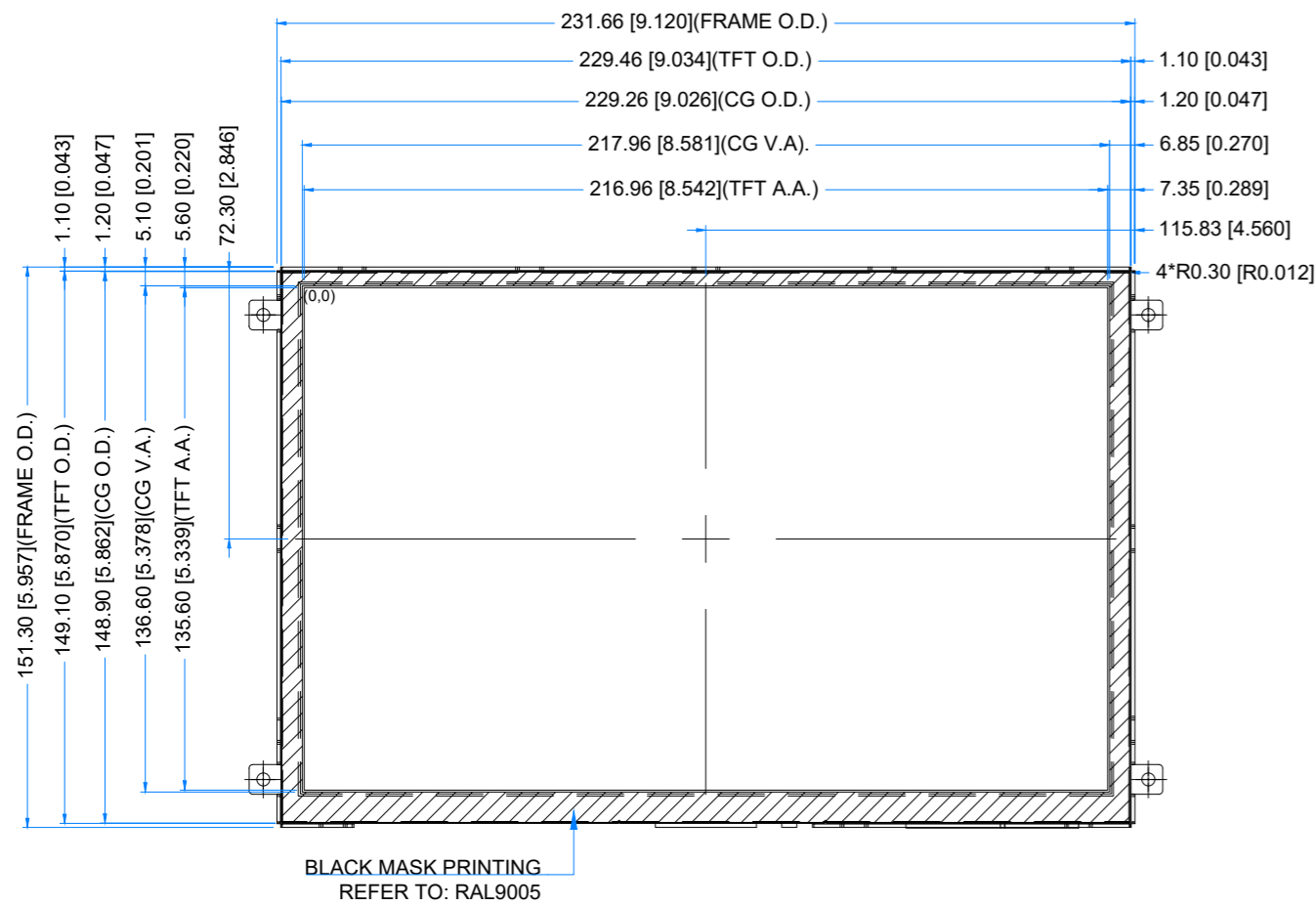
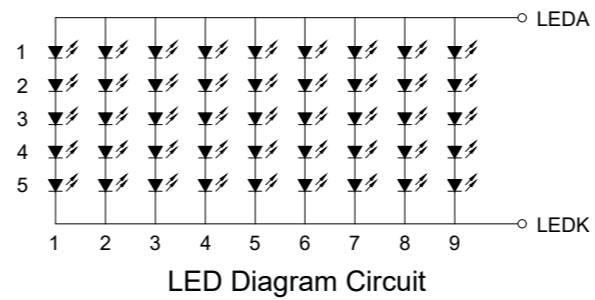
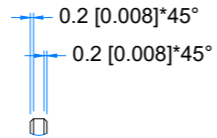


Revision:	Changes:	Date:
1.0	ECO_000405: initial release	2026.04.29



DETAIL A  
SCALE 4:1



PINOUT ON THE 2ND PAGE

**LCD NOTES:**  
1. LCD TYPE: TRANSMISSIVE, NORMALLY BLACK, IPS  
2. RESOLUTION: 1280x800  
3. VIEWING ANGLE: FREE  
4. CONTROLLER IC OF MAIN BOARD: LT7911D  
5. VIDEO INTERFACE: USB-C

**TP NOTES:**  
1. TP STRUCTURE: G+G  
2. CG THICKNESS: 1.10mm[0.043inch]  
3. SURFACE HARDNESS: 7H  
4. DRIVER IC: ILI2132A  
5. INTERFACE: USB-C

**GENERAL NOTES:**  
1. MODULE SURFACE LUMINANCE: 800 cd/m<sup>2</sup>  
2. OPERATING TEMPERATURE: -20°C ~ 70°C  
3. STORAGE TEMPERATURE: -30°C ~ 80°C  
4. WITHOUT INDIVIDUAL TOLERANCE:  
±0.3mm[0.012inch]  
5. USB-C Power supply 5.0V  
6. RoHS3 COMPLIANT

PN: RVT101HVUFWCA0 V2

SN:

DRAWN: M.Stabinski

2026.04.29

1:1.99

CHECKED: K.Szymanski

2026.04.29

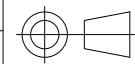
[mm]

APPR: M.Wierzbowski

2026.04.29

ISO A3

P. 1 of 1





EXTERNAL KEYBOARD CONNECTOR - P6			
Pin No.	Desc.	Pin No.	Desc.
1	DOWN	2	UP
3	EXIT	4	MENU
5	PWR	6	LED_EN
7	GND	8	KEYBOARD VDD

BACKLIGHT PWM & POWER - P5			
Pin No.	Desc.	Pin No.	Desc.
1	GND	2	GND
3	EN	4	PWM
5	VDD	6	VDD